

Installation and Use
CP2P Flash Load Utility

YORK Firmware Update Tool

YORK Marine, Controls/ – the people to talk to



Content

Table of Contents

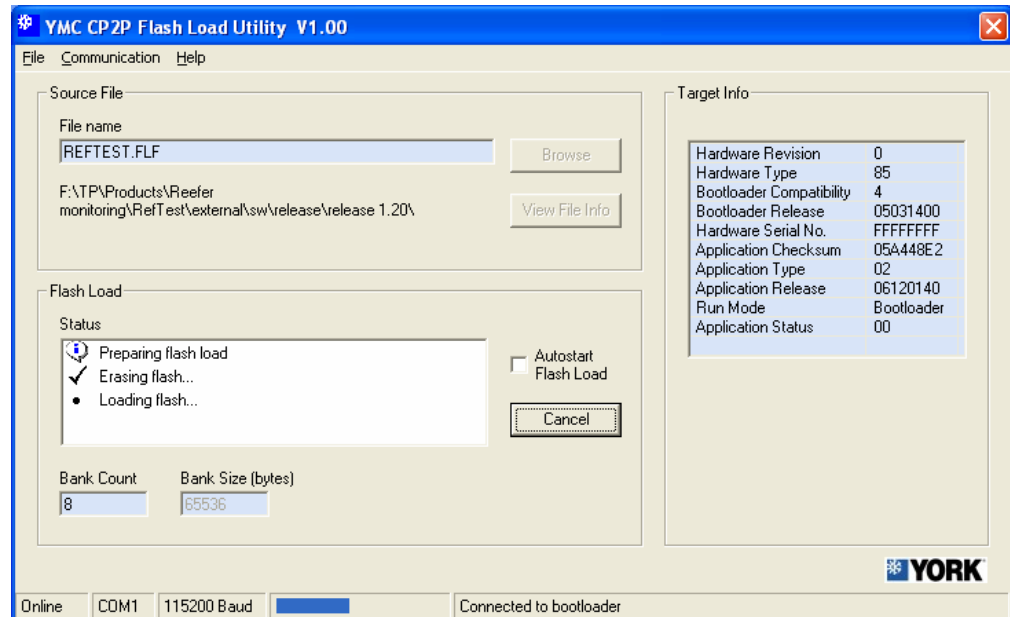
Introduction3
 Installation.....4
 Updating Firmware.....5
 Document Revision Record7

YORKJens Juul	© Copyright YORK Marine ApS All Rights Reserved
---------------	--

Introduction

About the CP2P Flash Load Utility

The CP2P Flash Load Utility from YORK Marine, Controls is a Windows PC application for updating firmware in YORK products. It is compatible with all YORK products developed since 2000 that support flash load update via RS232 serial communication with a PC.



About this document

This document describes how to install and use the CP2P Flash Load Utility. It is based on software version 1.00.

System requirements

The CP2P Flash Load Utility runs on Windows 2000 and XP PCs with a genuine RS232 serial port. The utility does not work with a USB to Serial Port adaptor.

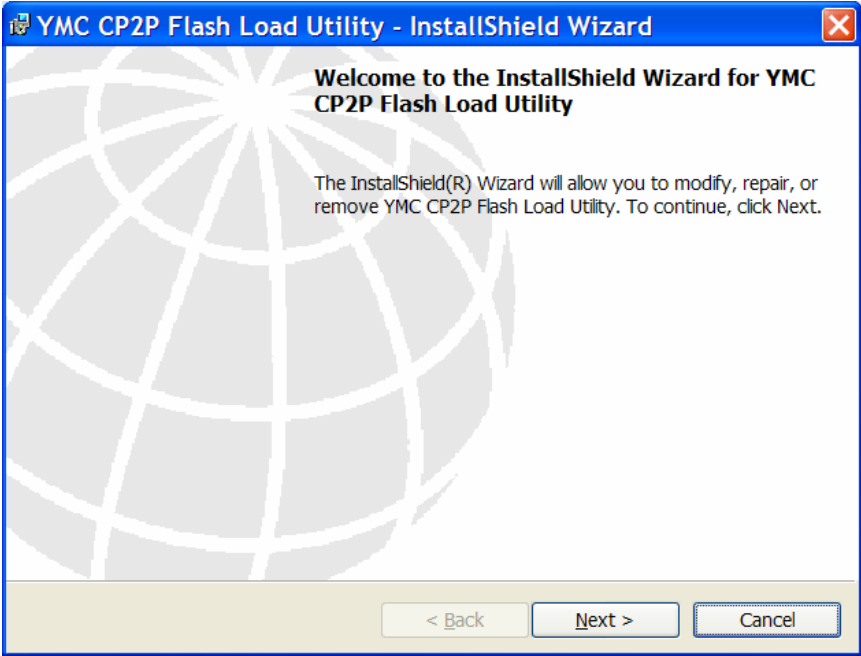
Supported products

- REFBOX
- REFTTEST
- REFLINE
- ComPosit
- SG+
- RS2LAN
- Power Line Tester

Installation

Installation procedure

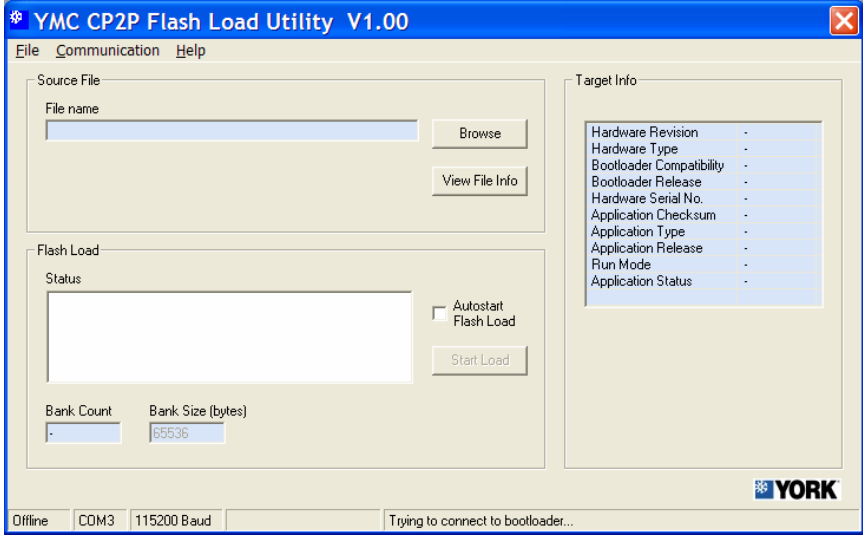
Follow the steps below to install the CP2P Flash Load Utility on your computer.

Step	Action
1	Close any applications you have open.
2	Locate the "setup" file. If you received a CD-ROM, the file is located in the "CP2P Flash Load" folder.
3	Double-click the file to start the installation wizard. <div data-bbox="552 636 1417 1290" style="border: 1px solid black; padding: 10px; margin-top: 10px;">  </div>
4	Click Next to continue.
5	Follow the on-screen instructions to complete the installation. When installation is successfully completed, a new folder called "YMC" is added to the program list in your start menu.

Error! Not a valid bookmark self-reference.

Establishing a link

Follow the steps below to establish a link to the device to be updated.

Step	Action
1	<p>Open the CP2P Flash Load Utility by selecting it from the YMC folder in your Windows program list in the Start menu.</p> 
2	Select the appropriate COM port from the Communication menu.
3	With the device off, connect the cable to the PC's COM port and the device. Refer to the device user manual for connection details.
4	Turn on the device. It will enter bootloader mode and connect to the PC automatically. If successful, "Online" and "Connected to bootloader" appear in the status line at the bottom of the window.
5	If the device fails to connect, verify that the correct COM port is selected and then toggle power to the device off and on.

Updating firmware

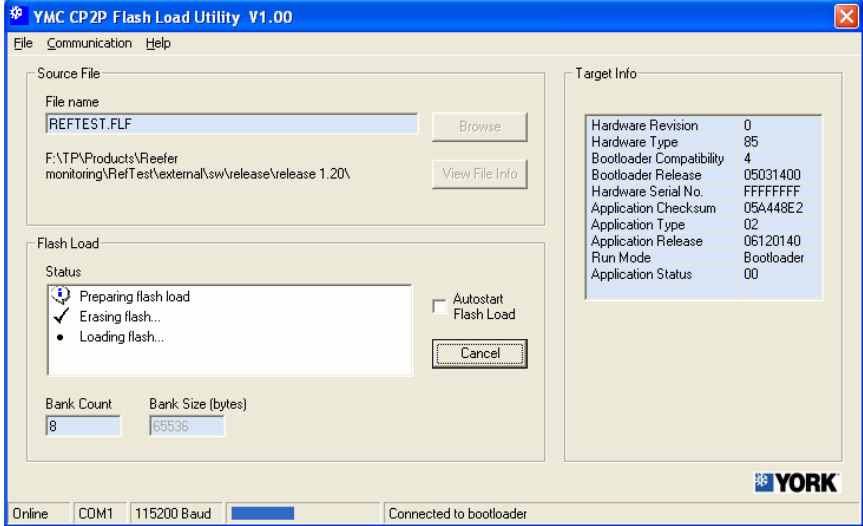
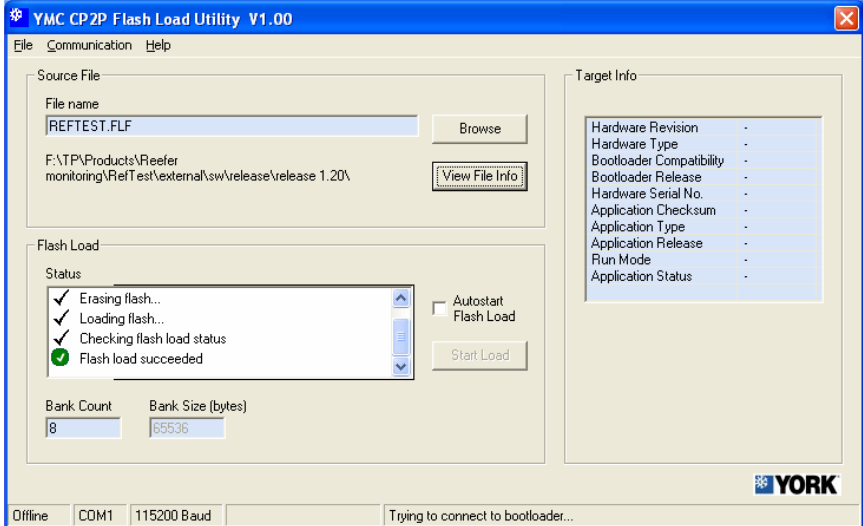
Follow the steps below to update device firmware.

Step	Action
1	Establish a link to the device as described above.
2	Click Browse and locate the flash load file (with file extension "FLF") for the device.
3	When the FLF file has been selected you can view information about the update by clicking View File Info .

Continued on next page

Error! Not a valid bookmark self-reference., Continued

Updating firmware (continued)

Step	Action
4	<p>Click the Start Load button to start the firmware update process. Progress is indicated in the Status box.</p>  <p>The screenshot shows the 'YMC CP2P Flash Load Utility V1.00' window. The 'Source File' section has 'REFTEST.FLF' in the file name field. The 'Flash Load' section shows a status list with 'Preparing flash load' selected. The 'Target Info' section displays various hardware and application details. The status bar at the bottom shows 'Connected to bootloader'.</p>
5	<p>When the firmware has been successfully updated, the device will disconnect from the CP2P Flash Load Utility and reboot in normal operating mode.</p>  <p>The screenshot shows the same utility window. The status list now includes 'Erasing flash...', 'Loading flash...', 'Checking flash load status', and 'Flash load succeeded' (highlighted with a green checkmark). The 'Start Load' button is visible. The status bar at the bottom shows 'Trying to connect to bootloader...'.</p>
6	<p>If you have multiple devices to update, select the Autostart Flash Load option. Then connect the next device and apply power. The update will commence as soon as the connection is established.</p>

Document Revision Record

Rev.	Date	Author	Brief description of change	Pages affected
1.0	070213	MA	Original issue	All
1.1	070502	RSV	Supported products added	3

Document Revision Record

Revision 1.0 · Updated: 031215

Project : YORK Firmware Update Tool

File: f:\tp\products\communication devices and tools\cp2p flash load utility>manuals\co2p user guide v.1.1.doc

YORK Marine, Controls

Author: Marc Anderson · Owner: Claus Eifer

Page 7 of 7