

Technical Bulletin - LogMan II for PC

Using the LogMan II PC application requires that a standard RS-323 communication port is available on the PC. Newer types of Laptop computers rarely feature such a port, which have to be applied separately.

There are two obvious solutions for the missing RS-323 COM port:

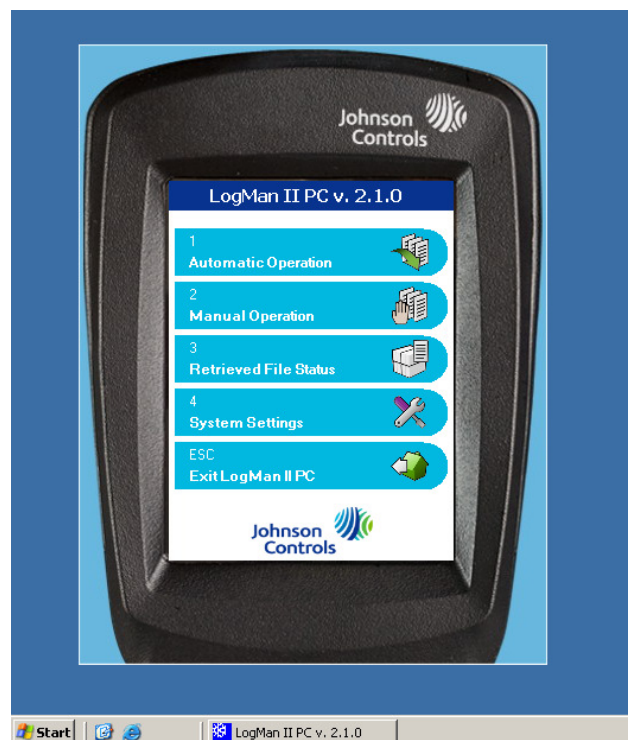
1. PCMCIA based RS-232 COM port
2. USB to RS-232 converter

In general the PCMCIA solution is the best and most reliable solution, but also the most expensive.

A USB solution is more cost effective, but is due to the conversion of data also significant slower and can not be expected to work in all cases.

As these adaptors are made by a lot of different vendors and are significant less standardized than PC's in general, a list of tested adaptors can be found below.

Only the adaptors approved on the list can be expected to work with LogMan II PC.



The following adaptors have been tested:

Adapter	Result	Comment
PCMCIA Quatech	Approved	Good performance – Significant better than USB
USB MOXA UPort 1100	Approved	Best possible USB performance
USB DIGI Edgeport	Approved – but very slow	Very bad and slow performance
USB Sandberg	Approved	Best possible USB performance
USB Hawking	FAILED	Not functional with LogMan II PC

<p>Johnson Controls Denmark ApS Marine Jens Juuls Vej 28, 8260 Viby J, Denmark Tel: +45 87 36 35 00 - Fax: +45 87 36 35 01 www.myRefcon.com - cg-eur-dk-vibymarine@jci.com</p>	<p>© Copyright Johnson Controls Denmark ApS All Rights Reserved</p>
---	--